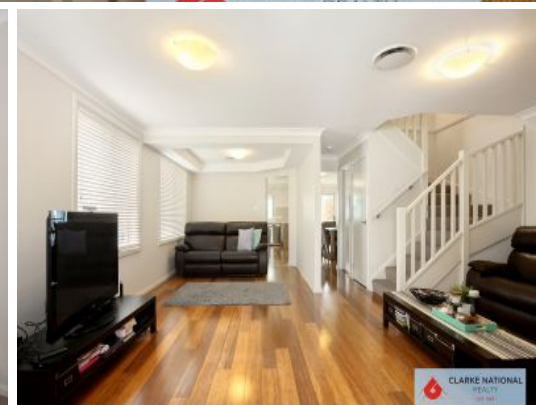
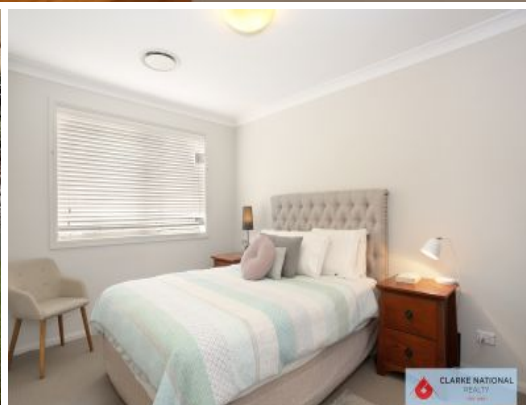




CLARKE NATIONAL

REALTY

- EST. 1953 -



2A Claverdon Avenue Picnic Point, NSW

4 2 1

ONE OF THE BEST STREETS IN THE AREA

**** OPEN FOR INSPECTION THIS COMING SATURDAY ****

Welcoming to the market this beautifully presented brick veneer Duplex in arguably one of the best streets in the area.

Positioned in a cul-de-sac street with the Georges River National Park bush trails only steps away, there is so much to like about this home. Boasting;

- 4 decent size bedrooms all with built-in robes
- En-suite off the master
- Fully tiled main bathroom with 3rd toilet situated downstairs
- Spacious living/dining area with the potential for 2nd living off kitchen
- Ducted air-conditioning throughout

Water Rates: \$178.00 p/q



James Clarke

0408 443 865

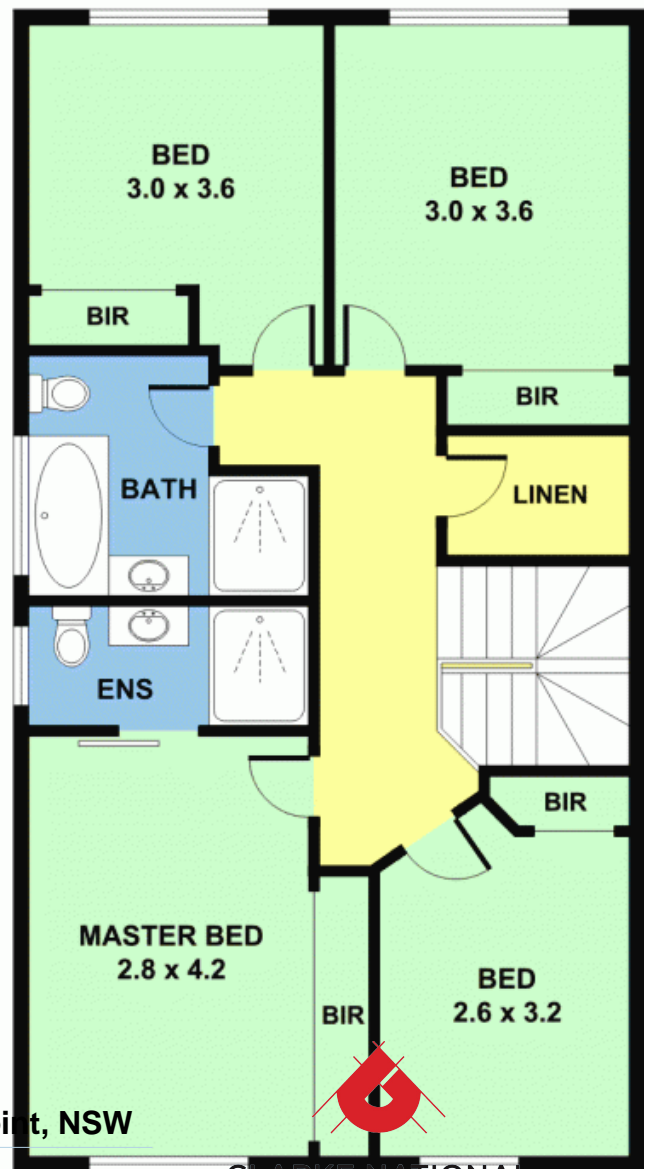
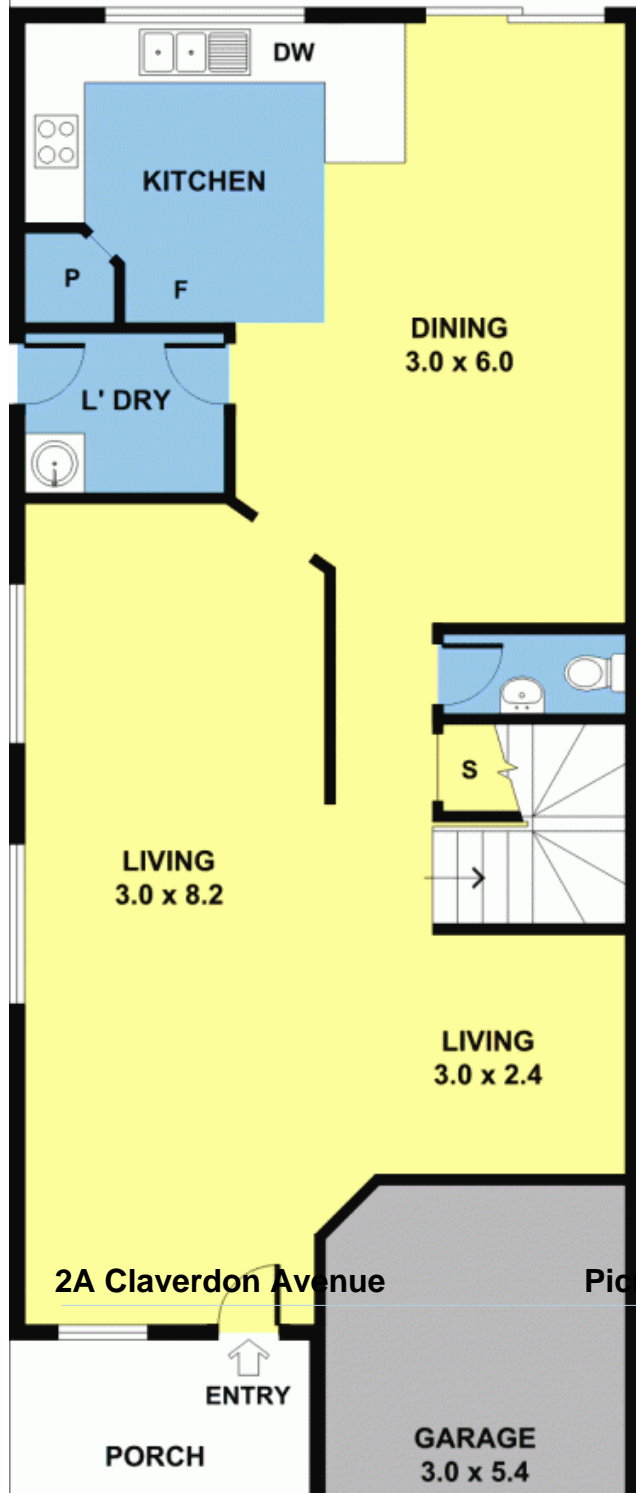


Lucy Clarke

0407 919 408

SHED
2.4 x 1.6

ALFRESCO
6.0 x 3.6



2A Claverdon Avenue

Picnic Point, NSW

CLARKE NATIONAL
REALTY

- EST. 1953 -

FIRST FLOOR