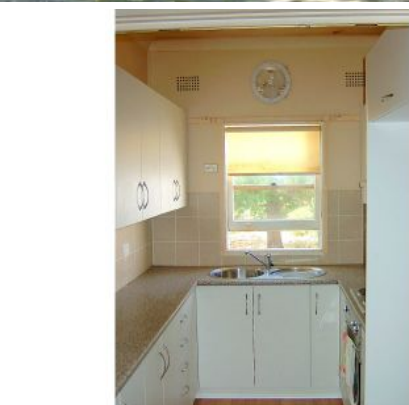




CLARKE NATIONAL
REALTY

- EST. 1953 -



PADSTOW, NSW



4



1



1

CONVENIENT TO EVERYTHING!!!

TO VIEW YOU MUST CALL 9773 7888. Spacious 4 bedroom home, including large separate lounge room and dining room. Lovely looking updated kitchen that overlooks a good sized family yard. Lock up garage. Located close to shops, transport and schools. Ideal for a family. NO PETS.

Clarke National Realty