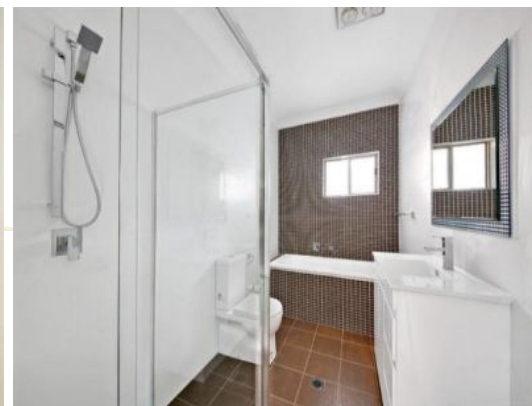
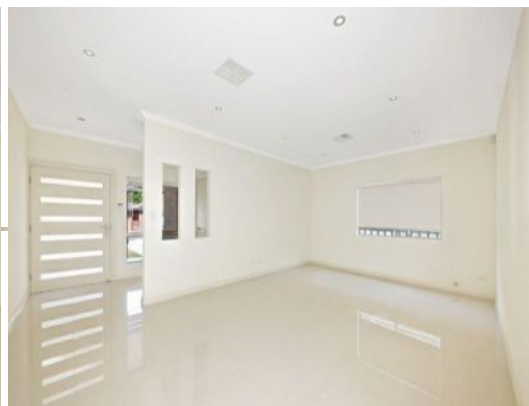




CLARKE NATIONAL
REALTY

- EST. 1953 -



92A Ely Street REVESBY, NSW



4



2



1

MASSIVE 4 BEDROOM FULL BRICK HOME - GET IN QUICK!!

Introducing this brand new mansion-sized duplex situated on almost 500 square meters in one of Revesby's most prominent locations, constructed by one of the area's most reputable building companies.

This home boasts the following features:

- * Colossal single-level development;
- * Double-brick construction;
- * 4 double-size bedrooms including large built-in robes and elegant en-suite off the master bedroom;
- * Spacious study and dining areas;
- * Massive separate living and family areas with gas points;
- * Enormous backyard for the kids;
- * Positioned in a whisper quiet location within a stones throw to Revesby CBD comprising o



James Clarke

0408 443 865