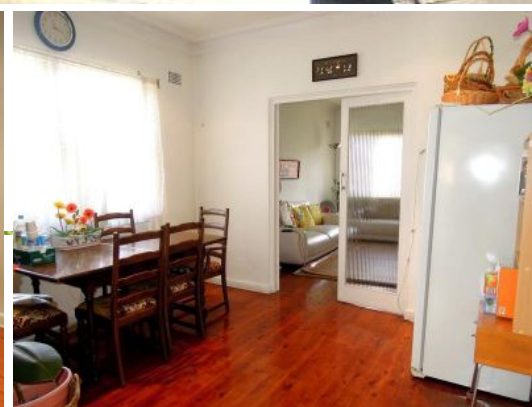




CLARKE NATIONAL
REALTY

- EST. 1953 -



258 Canterbury Road REVESBY, NSW



SOLD BY JAMES CLARKE - 0408 443 865

Opportunity awaits with this full brick beauty!! Featuring;

- 3 decent size bedrooms with mirrored built ins off the master
- Formal lounge room
- Spacious dining room off the Kitchen
- Electric cooking appliances in a well maintained kitchen
- Unique style bathroom
- Single lock up garage and plenty more off street parking.



James Clarke

0408 443 865