



CLARKE NATIONAL  
REALTY

- EST. 1953 -



10 Valmay Avenue PICNIC POINT, NSW



3



2



2

## SOLD BY LUCY CLARKE - 0407 919 408

A contemporary design in one of the best streets in Picnic Point. The list of features are endless, however here are just a few;

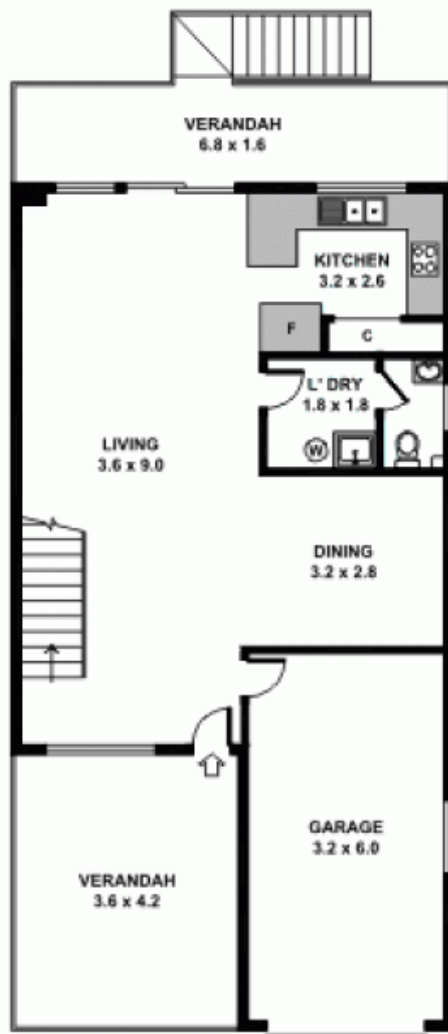
- 3 generous size bedrooms all with built in robes and an en-suite and balcony off the master
- Fully tiled main bathroom with freestanding bathtub
- Modern day living at its finest with open plan L-shape living and dining room
- Reverse cycle air-conditioning
- Ample size kitchen that overlooks the great size backyard
- Full brick construction on lower level and brick veneer upstairs
- Rear covered entertaining/BBQ area
- Single lock up garage
- Great storage space with easily accessible elevated attic



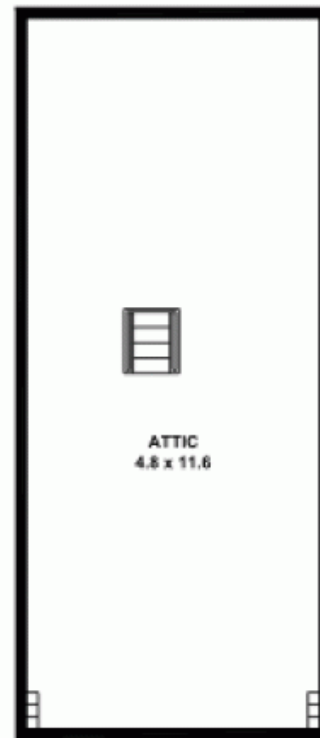
**James Clarke**

0408 443 865

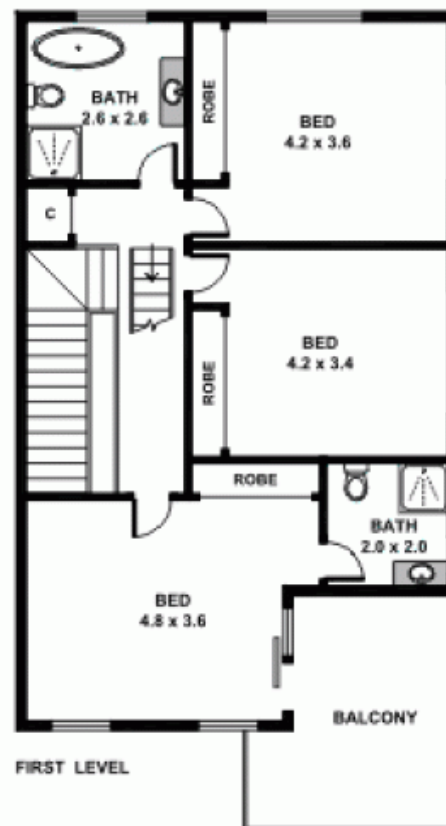
# 10 Valmay Ave, Picnic Point



GROUND LEVEL



SECOND LEVEL



FIRST LEVEL

10 Valmay Avenue

PICNIC POINT, NSW

Please note: All stated dimensions are approximate only. Particulars given are for general information only and do not constitute any representation on the part of the vendor or agent.