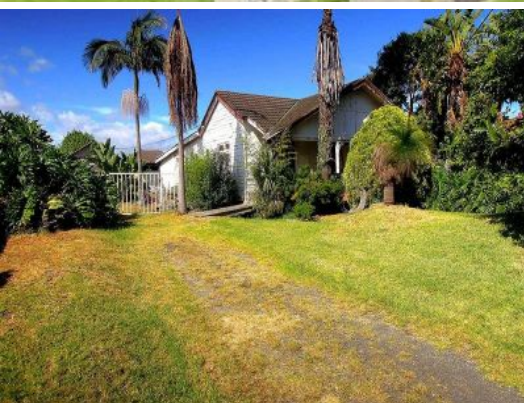




CLARKE NATIONAL
REALTY

- EST. 1953 -



127 Beaconsfield Street REVESBY, NSW



3



1



1

SOLD BY LUCY CLARKE AND JAMES CLARKE - 9773 7888

Clarke National REALTY has listed this fantastic opportunity for anyone looking to knock down and rebuild or potentially develop. Situated in the heart of Revesby, this property offers the following;

23.3m frontage and a depth of 36.5m (approx.)

Total land size of 853.6sqm (approx.)

Situated on the high side of the street

Has potential for detached duplex development (subject to Council approval)

The house itself is very original that includes 3 bedrooms, 1 bathroom, formal living room with fireplace, original kitchen and spacious dining room.



Lucy Clarke

0407 919 408