



CLARKE NATIONAL
REALTY

- EST. 1953 -



3/47-49 Gleeson Avenue CONDELL PARK, NSW



**SOLD BY LUCY CLARKE & JAMES CLARKE -
0408 443 865**

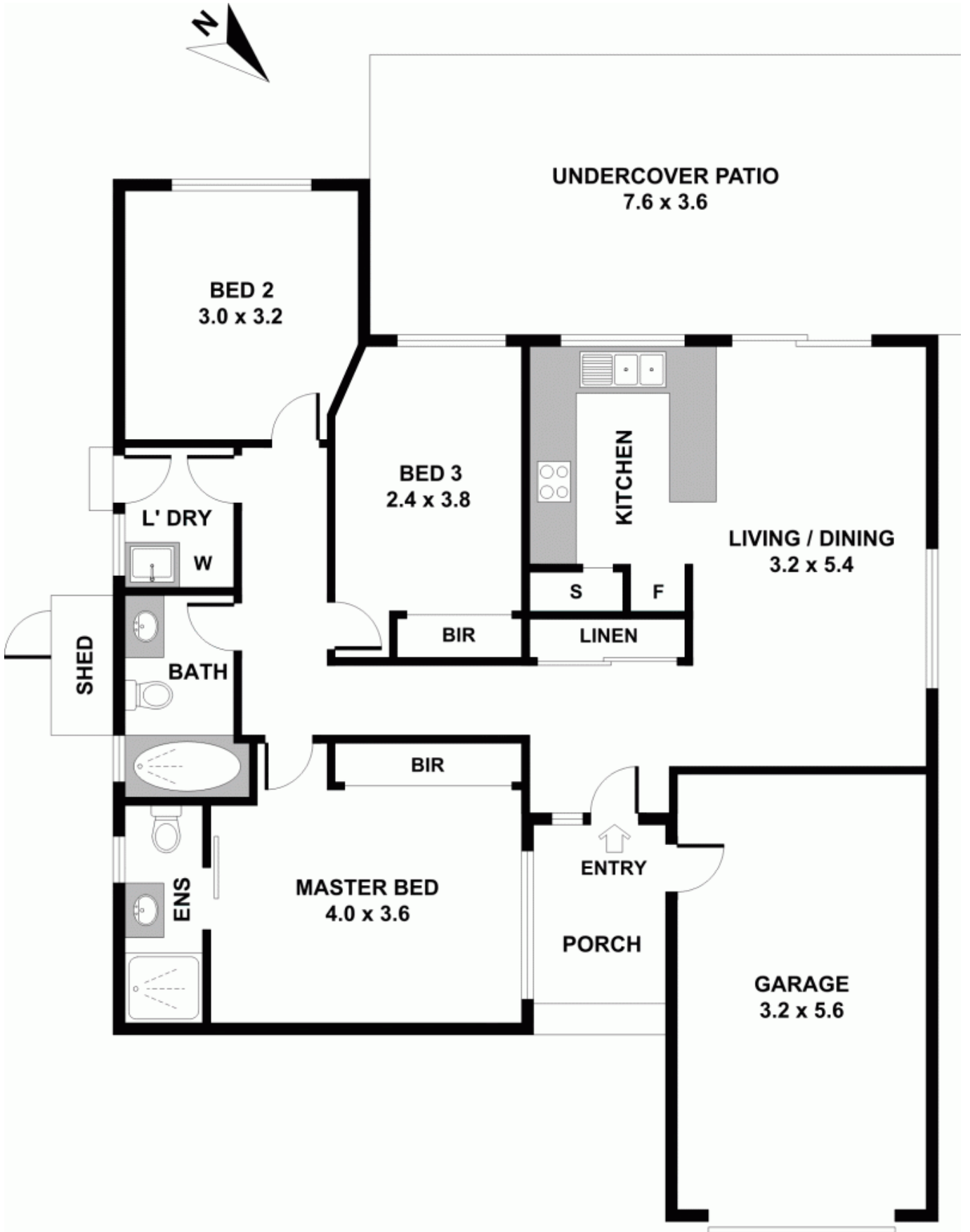
Introducing this very well maintained Villa set back from the street tucked away in a very handy position in Condell Park. Featuring

- 3 decent size bedrooms with en-suite off the master
- Fully tiled bathroom
- Open plan living and dining room
- Large kitchen with gas cooking appliances
- A great entertaining, low maintenance backyard
- Full brick and completely free-standing Villa
- Air conditioning throughout main living area and master bedroom
- In close proximity to Bankstown CBD, train station, Schools, local shops and bus stops



James Clarke

0408 443 865



3/47-49 Gleeson Avenue

CONDELL PARK, NSW



CLARKE NATIONAL
REALTY

- EST. 1953 -