



CLARKE NATIONAL
REALTY

- EST. 1953 -



47 Alliance Avenue REVESBY, NSW



3



1



1

**SOLD BY JAMES CLARKE & LUCY CLARKE -
0408 443 865**

Clarke National Realty welcomes to the market a property catering to a young family looking to upsize, investors after an above average rental yield or the developers and builders that want to knock down and rebuild.

Featuring;

15.24m frontage - 556sqm in total (approx.)

3 bedrooms 2 with built in robes

Tiled bathroom plus a 2nd toilet

L-shape living and dining room

Modern kitchen with gas cooking appliances

Rear spacious 2nd living area

Enclosed back veranda that overlooks a great size backyard for the kids

Ducted air-conditioning throughout

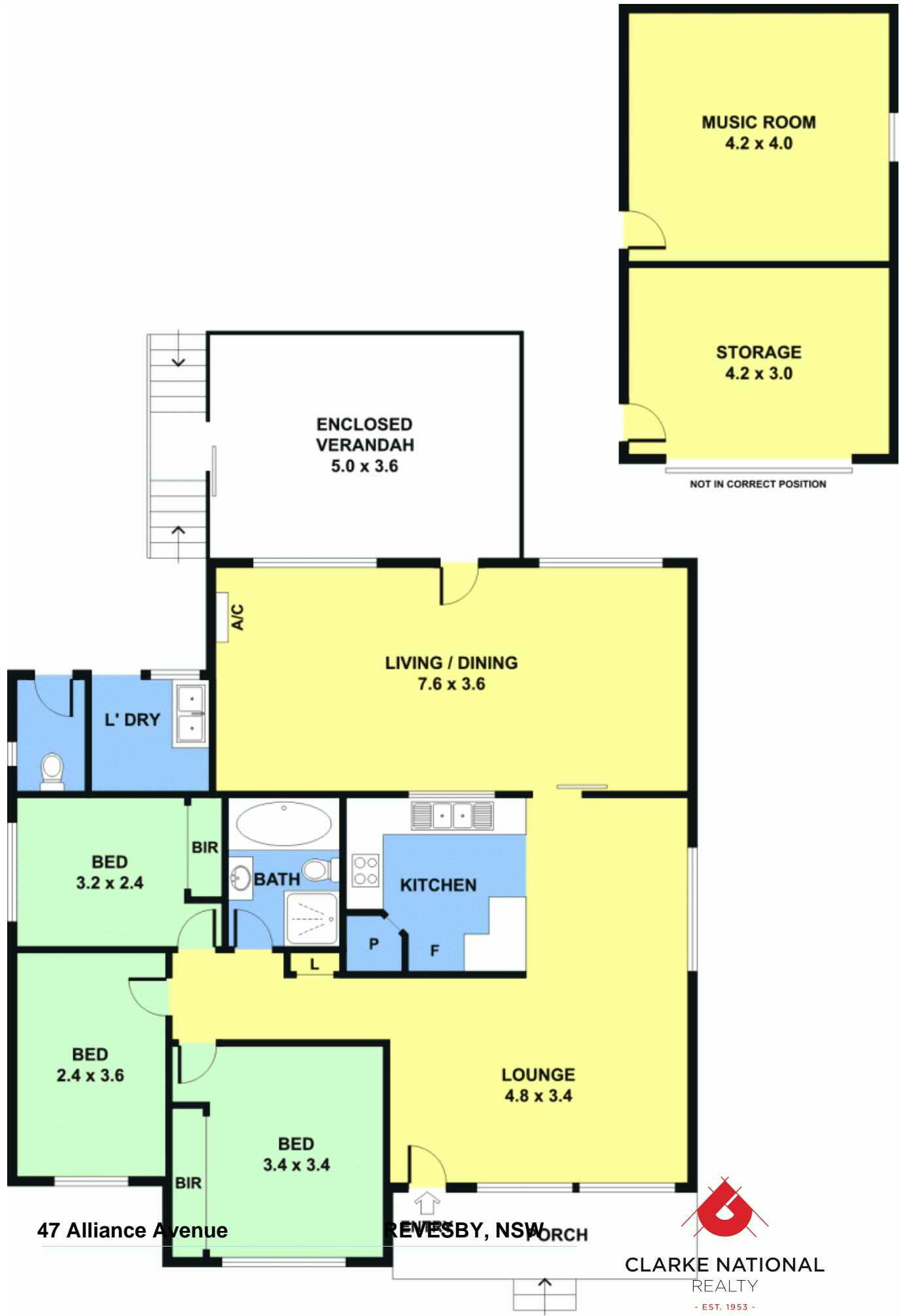
Brick veneer construction

For more information please call James Clarke or Lucy Clarke of Clarke National REALTY on



James Clarke

0408 443 865



CLARKE NATIONAL
REALTY

- EST. 1953 -

