



CLARKE NATIONAL  
REALTY

- EST. 1953 -



2/3 Berrima Avenue PADSTOW, NSW



3



2



2

### SOLD BY JAMES CLARKE - 0408 443 865

Set in a cul-de-sac street location, this free-standing street front Townhouse is ideal the astute First Home Buyer or Investors. Boasting;

- 3 great size bedrooms all with mirrored built-in robes
- En-suite and balcony off the master bedroom
- Full brick downstairs, brick veneer upstairs
- Upstairs rumpus area
- Great size tiled main bathroom
- L-shape living and dining area
- Fully paved easy to maintain backyard
- Double lock up garage with internal access



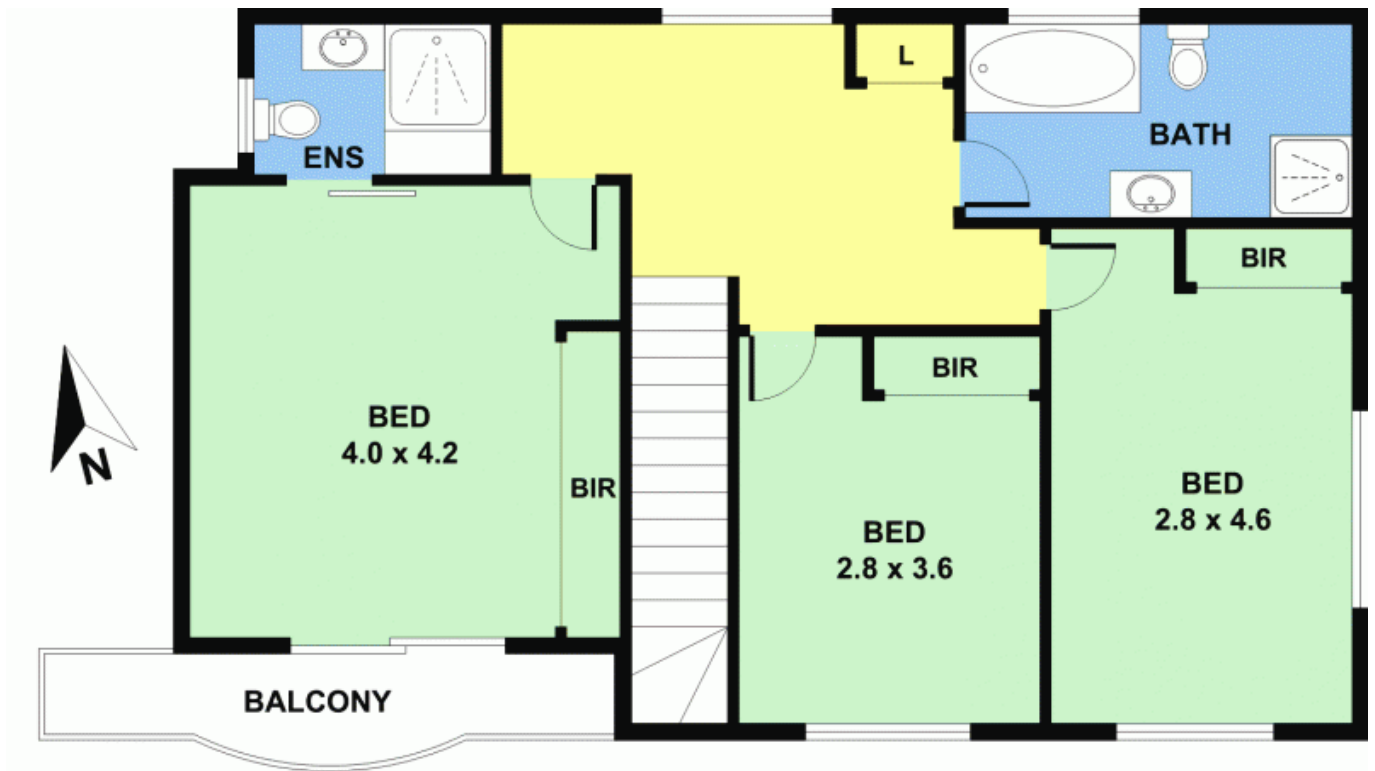
**James Clarke**

0408 443 865

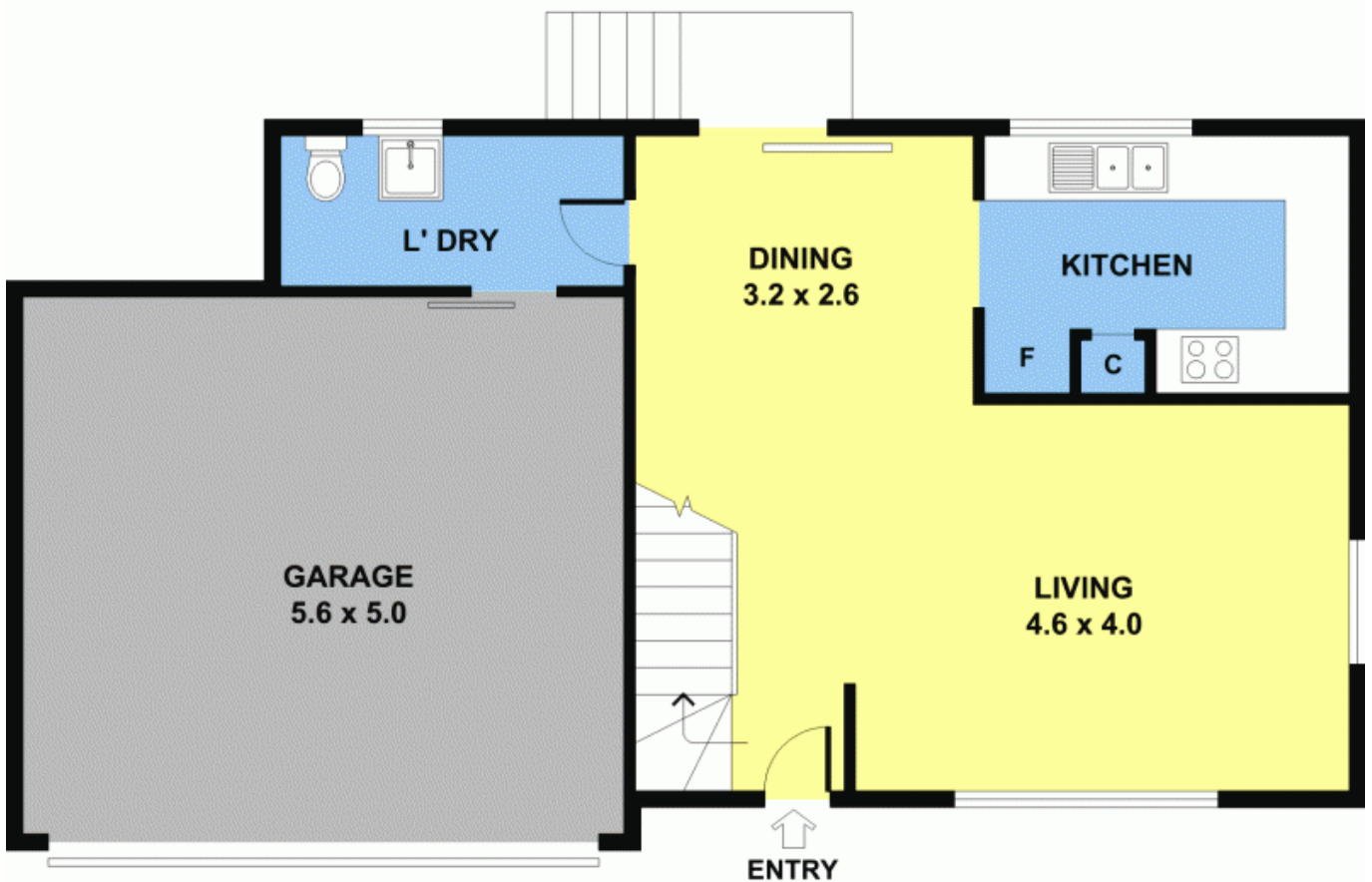


**Lucy Clarke**

0407 919 408



FIRST FLOOR



GROUND FLOOR

2/3 Berrima Avenue

PADSTOW, NSW



CLARKE NATIONAL  
REALTY

- EST. 1953 -