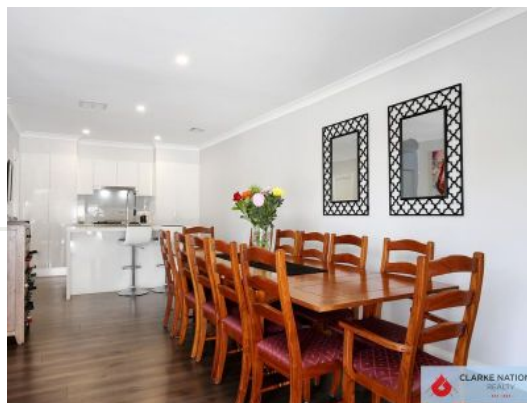




CLARKE NATIONAL
REALTY

- EST. 1953 -



7 Windsor Road PADSTOW, NSW



3



2



1

SOLD BY JAMES CLARKE - 0408 443 865

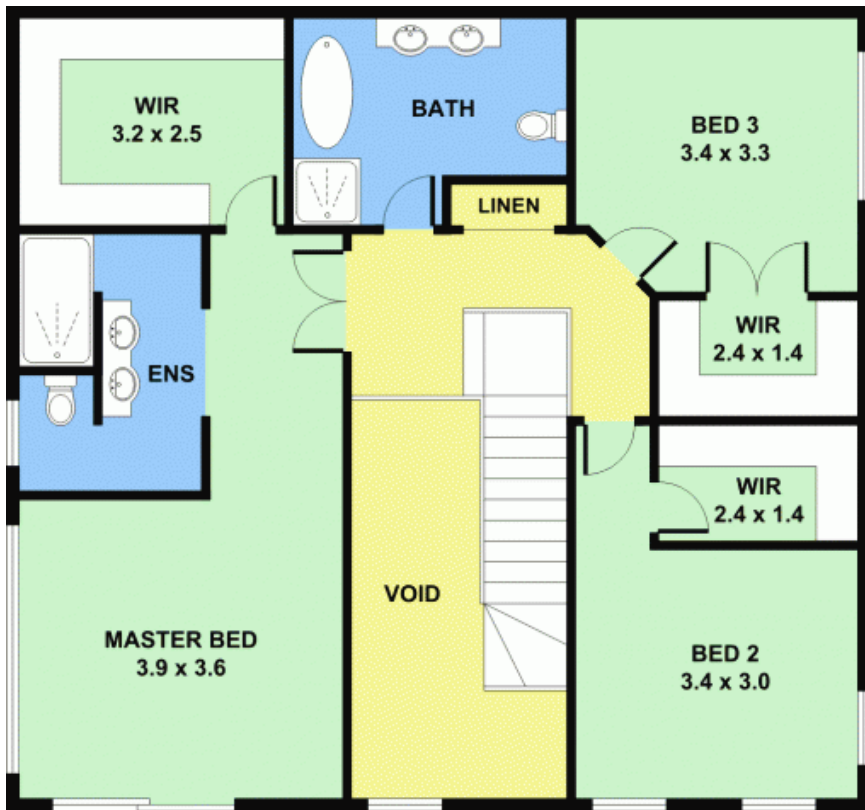
The moment you walk into this immaculate contemporary family home, you will be ticking the box's as you go! Situated on a corner block in an elevated position in Windsor Rd, the first impression you get walking into the sun-filled grand entrance will make you feel at home instantly. Boasting;

- 3 generous size bedrooms all with walk-in robes
- Huge master bedroom that fits a super sized king bed + balcony with fantastic views
- 2-way en-suite with dual basin for his and hers + gigantic walk-in robe fit for a Queen
- Spacious living room that leads to the widespread dining area with timber flooring throughout
- Bricker veneer construction
- Situated on a generous 304sqm - this is one of the largest and finely finished 3 bedroo



James Clarke

0408 443 865



FIRST FLOOR



UNDERCOVER ALFRESCO 3.2 x 4.6

ENTERTAINING AREA 2.8 x 4.6

7 Windsor Road

PADSTOW, NSW

GROUND FLOOR



CLARKE NATIONAL REALTY

- EST. 1953 -