



CLARKE NATIONAL
REALTY

- EST. 1953 -



CLARKE NATIONAL



CLARKE NATIONAL
REALTY



CLARKE NATIONAL
REALTY



CLARKE NATIONAL
REALTY

71/169 Horsley Road Panania, NSW



2



2



1

RENOVATED & READY TO MOVE IN

Recently renovated Villa in the highly regarded complex of Panania Green is this gem of a home catered directly towards First Home Buyers and Investors with great rental return potential.

Boasting;

- 2 great size bedrooms with built-ins off the 2nd and huge walk-in robe and en-suite off the master
- Plantation shutters in both bedrooms
- Fully tiled contemporary main bathroom
- Spacious open plan living / dining area
- Decent size kitchen with gas cooking appliances
- Internal laundry
- Covered entertaining area with extra grass area for the kids

A fantastic starter for the astute First Home Buyer. For more information please contact J

Council Rates: \$295.00 p/q

Water Rates: \$179.00 p/q

Strata Rates: \$450.00 p/q



James Clarke

0408 443 865

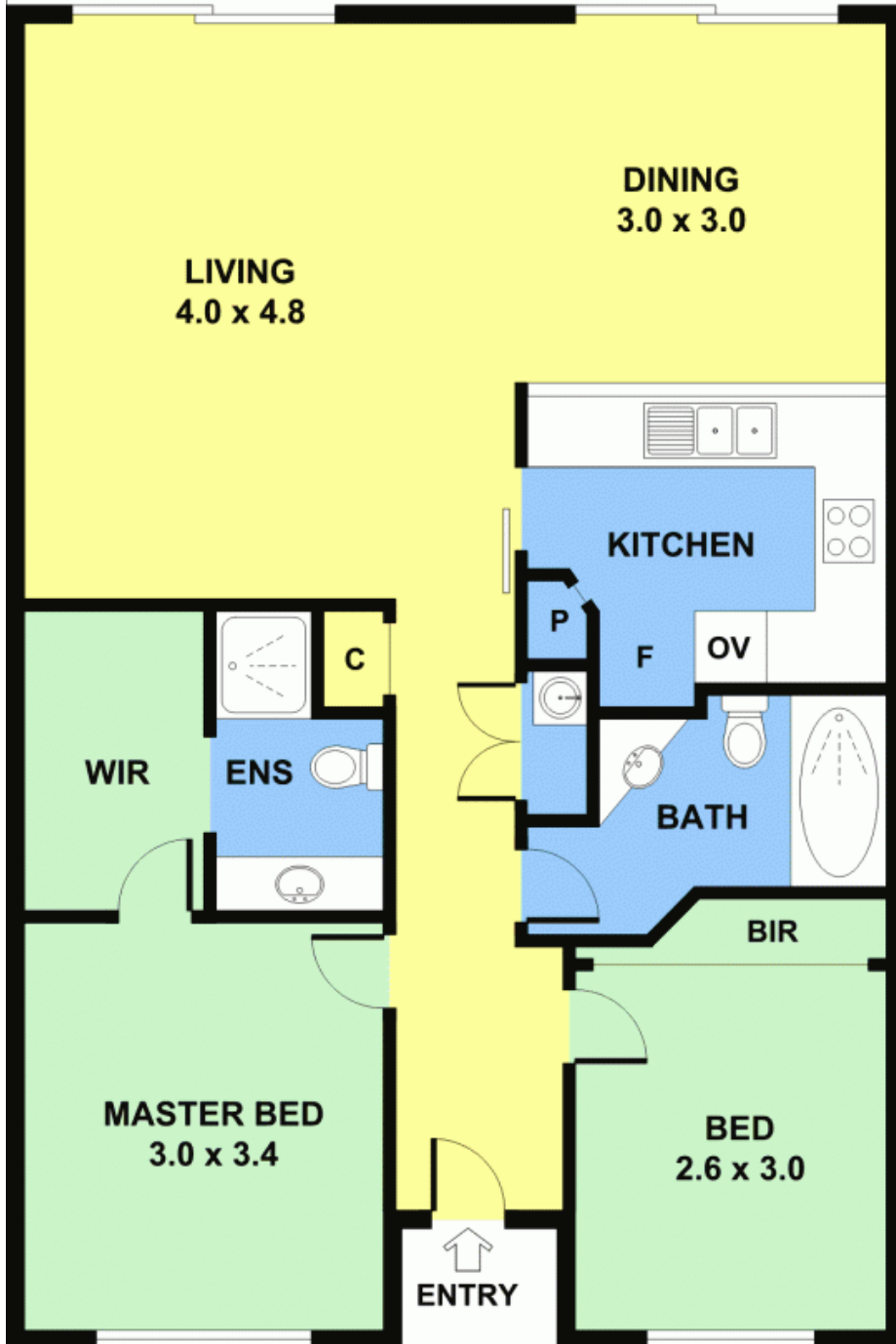


Lucy Clarke

0407 919 408



UNDERCOVER PATIO
7.0 x 2.4



NOT IN CORRECT POSITION

71/169 Horsley Road

Panania, NSW



CLARKE NATIONAL
REALTY

- EST. 1953 -