



CLARKE NATIONAL
REALTY

- EST. 1953 -



87 Horsley Road Panania, NSW



3



1



2

CORNER BLOCK WITH LOADS OF POTENTIAL

Positioned in a very central location sits this affordable north facing free standing home on a corner block that is only moments to Panania station and shops, as well as Revesby's CBD. This home is ideal for the astute first home buyer, Investor and a young family wanting to renovate or rebuild their dream home.

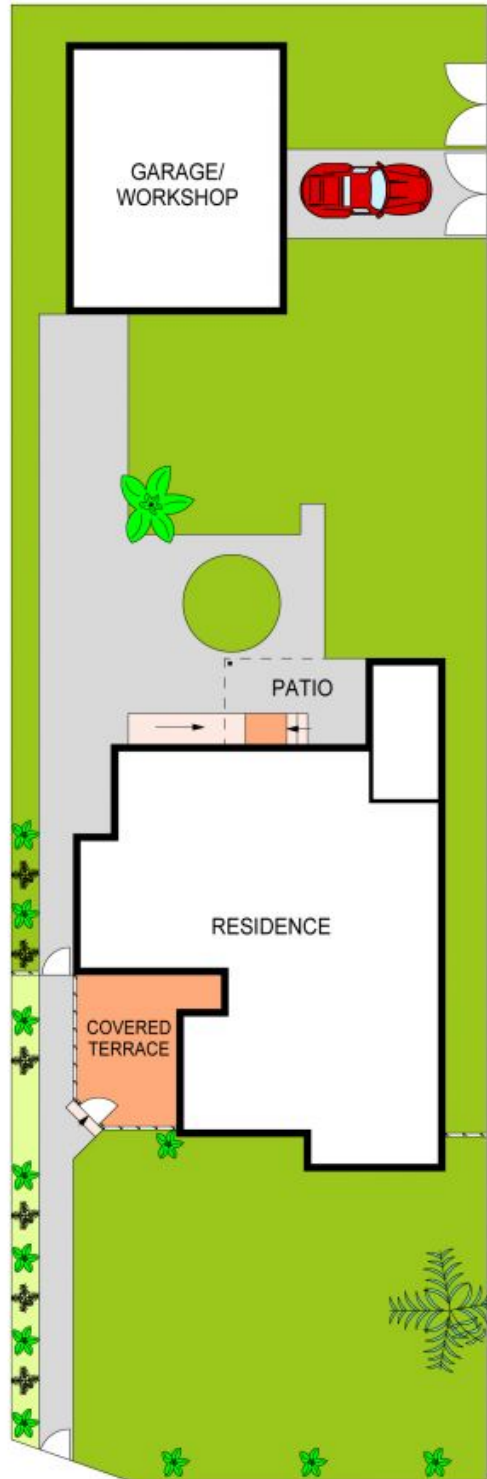
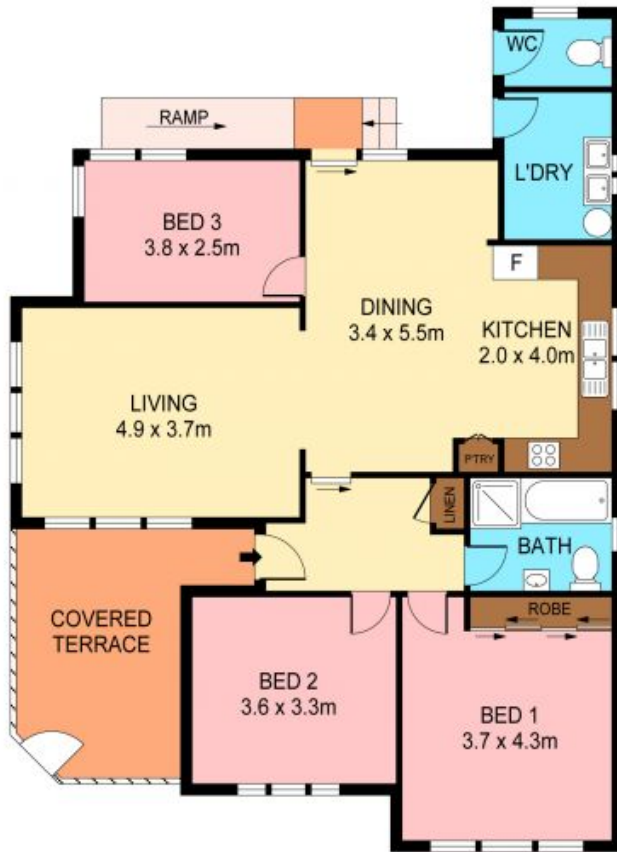
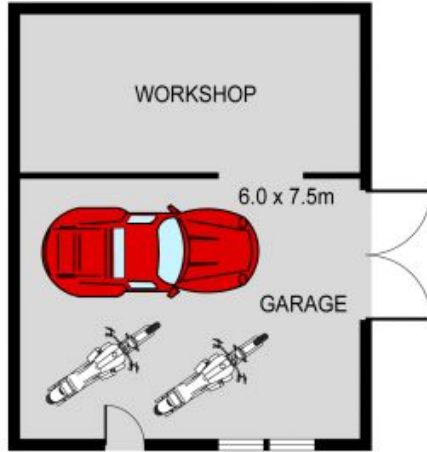
Boasting:

- 3 decent size bedrooms
- Tiled main bathroom
- Spacious semi-formal living area with air-conditioning
- Eat-in kitchen area
- 13.7m wide



James Clarke

0408 443 865



0 1 2 3 4 5
SCALE (METRES)

PLANS SHOWN ONLY INDICATIVE OF LAYOUT. DIMENSIONS ARE APPROXIMATE.
Ref. No. 102901

SITE PLAN
(NOT TO SCALE)



87 HORSLEY ROAD
87 Horsley Road

Panania, NSW



CLARKE NATIONAL
REALTY

- EST. 1953 -