



CLARKE NATIONAL  
REALTY

- EST. 1953 -



1/5 Ashmead Avenue Revesby, NSW



## WALK TO EVERYTHING REVESBY HAS TO OFFER

A fantastic Brick Villa in a boutique complex of just 6 stands and just 500m (approx.) to Revesby CBD, this large open plan north to rear facing home that is ideal to all first home buyers, Investors or anyone looking to downsize.

Boasting;

- 3 decent size bedrooms all with built-in robes
- Master includes an en-suite
- Open plan living, dining and kitchen
- Gas cooking and island benchtop in kitchen
- Modern fully tiled main bathroom
- Carpet throughout bedrooms

**Council Rates:** \$358.00 p/q

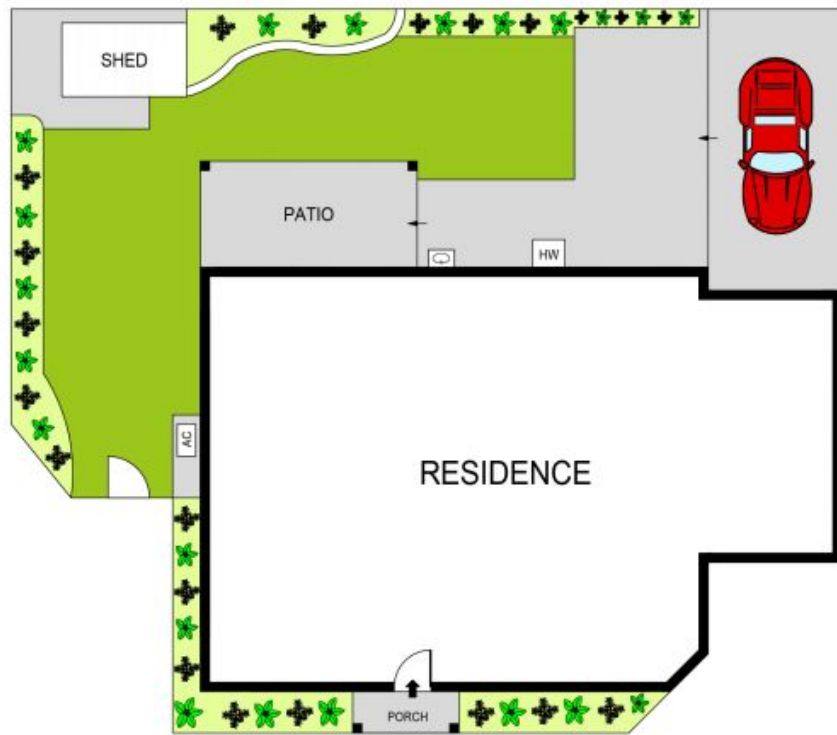
**Water Rates:** \$156.00 p/q

**Strata Rates:** \$548.00 p/q



**James Clarke**

0408 443 865



**SITE PLAN**  
(NOT TO SCALE)



0 1 2 3 4 5  
SCALE (METRES)

PLANS SHOWN ONLY INDICATIVE OF LAYOUT. DIMENSIONS ARE APPROXIMATE.  
Ref. No: 103951



**1/5 ASHMEAD AVENUE**  
**1/5 Ashmead Avenue**

**Revesby, NSW**



**CLARKE NATIONAL**  
**REALTY**

- EST. 1953 -