



CLARKE NATIONAL
REALTY

- EST. 1953 -



8/10 Raine Road Padstow, NSW



3



2



2

Well-cared for Villa in private & convenient location

Ideally located at the rear of a small Villa complex presents this beautiful brick veneer villa that's ideal for the astute first home buyer, investor or anyone looking to downsize to enjoy very limited maintenance.

Featuring:

- 3 good size bedrooms
- En-suite off the master
- Tiled main bathroom
- Open plan living and dining
- Ample size kitchen
- Ducted air-conditioning throughout
- Rear covered entertaining area

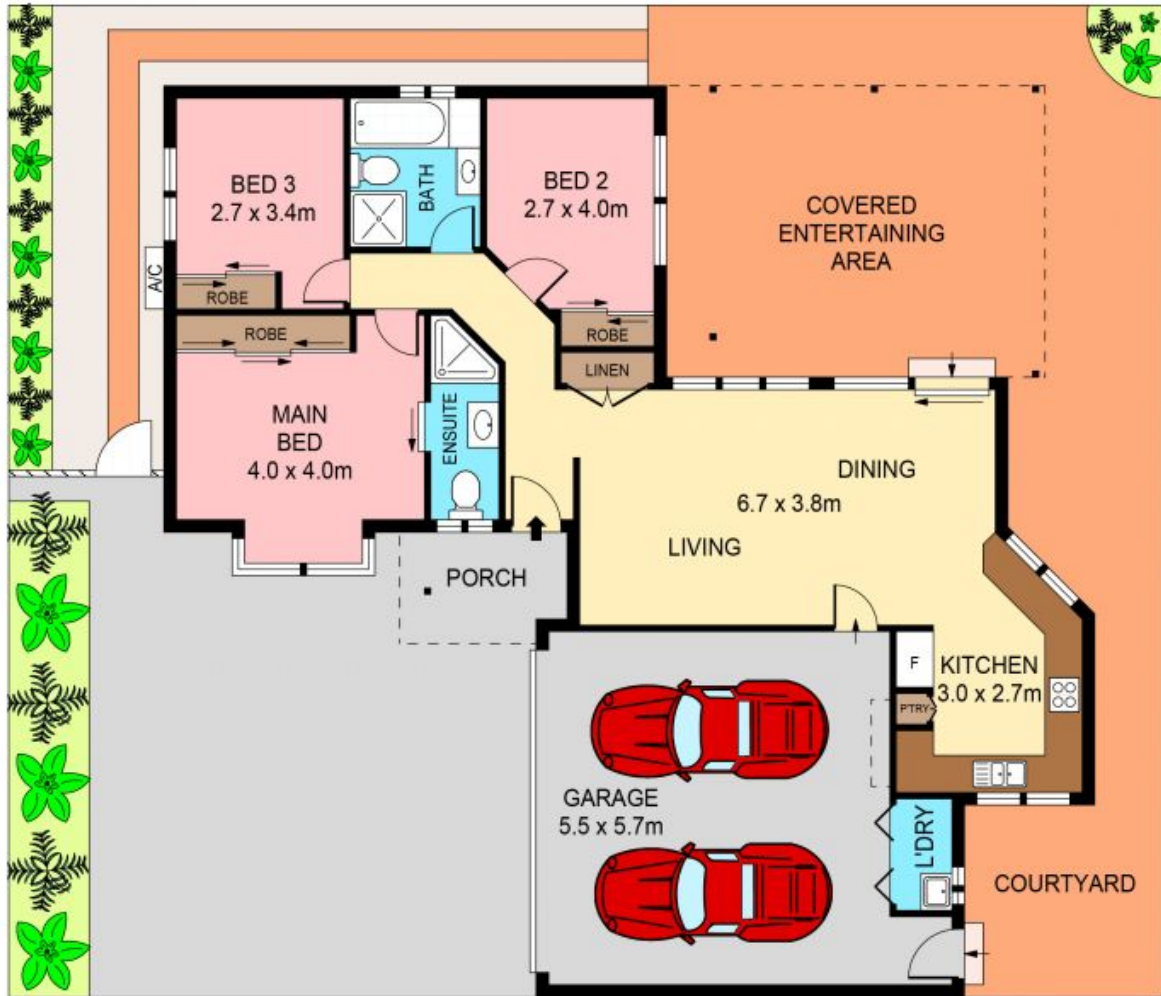
Council Rates: \$289.00 p/q

Water Rates: \$157.00 p/q



James Clarke

0408 443 865



PLANS SHOWN ONLY INDICATIVE OF LAYOUT. DIMENSIONS ARE APPROXIMATE.
Ref. No. 104896



8/10 RAINE ROAD
8/10 Raine Road

Padstow, NSW



CLARKE NATIONAL
REALTY

- EST. 1953 -