



CLARKE NATIONAL
REALTY

- EST. 1953 -



20 Defoe Street Wiley Park, NSW



5



2



2

WELL APPOINTED HOME ON 733SQM OF PRIME LAND

Welcoming this beautiful 5 bedroom family home that oozes size, style and space while being positioned centrally to Wiley Park and Punchbowl amenities.

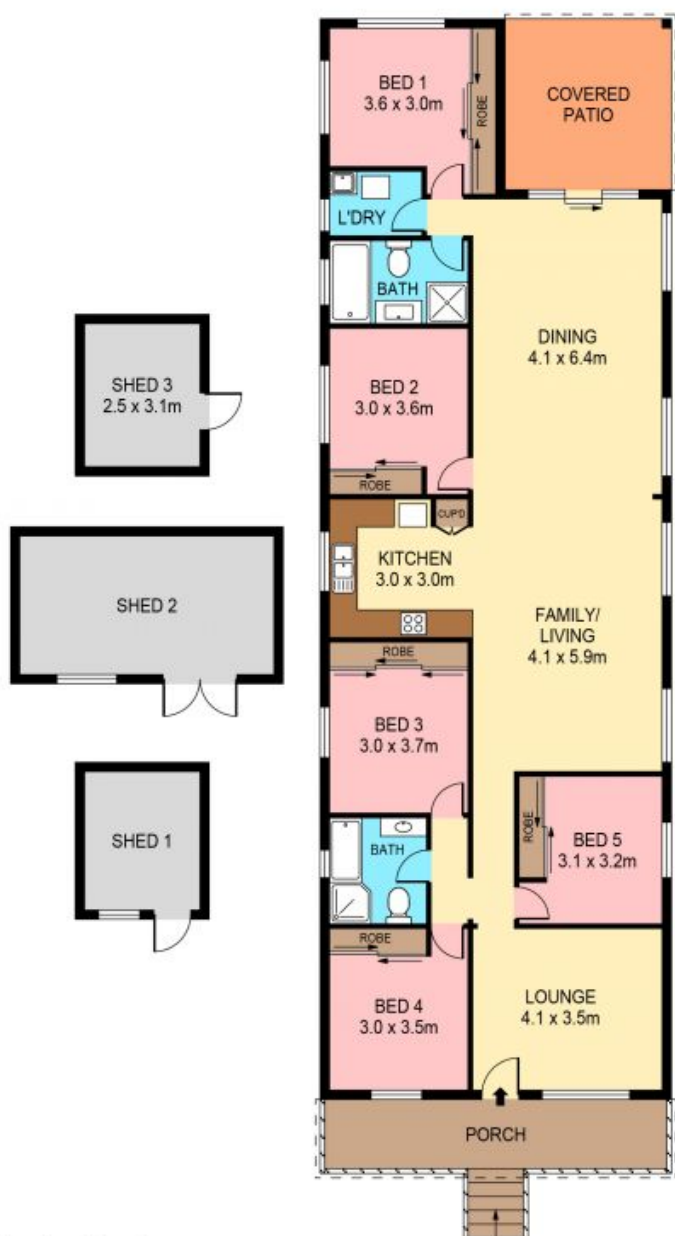
Boasting:

- 5 decent size bedrooms all with built-in robes
- 2 bathrooms
- 2 separate living areas
- Modern kitchen with gas cooking appliances
- Expansive open plan family living and dining area
- Air-conditioning
- Tiled throughout



James Clarke

0408 443 865



0 1 2 3 4 5
SCALE (METRES)

PLANS SHOWN ONLY INDICATIVE OF LAYOUT. DIMENSIONS ARE APPROXIMATE.
Ref. No: 106612



SITE PLAN
(NOT TO SCALE)



20 DEFOE STREET
20 Defoe Street

Wiley Park, NSW



CLARKE NATIONAL
REALTY

- EST. 1953 -