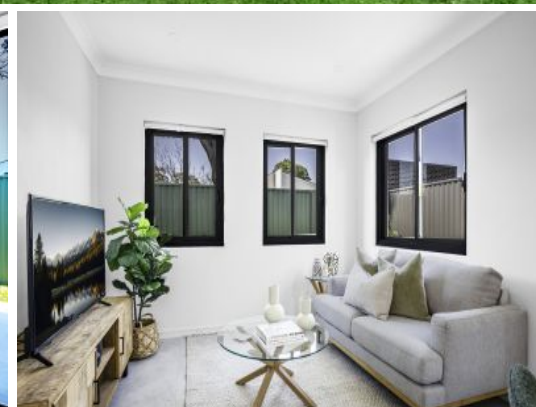




CLARKE NATIONAL
REALTY

- EST. 1953 -



1/49A Ely Street Revesby, NSW



2



1

***** DEPOSIT TAKEN*****

TO VIEW OR ENQUIRE PLEASE CALL 9773 7888. This 2 bedroom brand new flat is located in a great location close to local primary schools, shops and Revesby train station.

Features:

- Full brick construction
- 2 generous size bedrooms
- Both with built in wardrobes
- Modern bathroom
- Neat and tidy kitchen with gas cooking
- Living area filled with ample natural light
- Ducted air con throughout
- Tiled flooring throughout

Clarke National Realty

www.clarke-national-realty.com.au